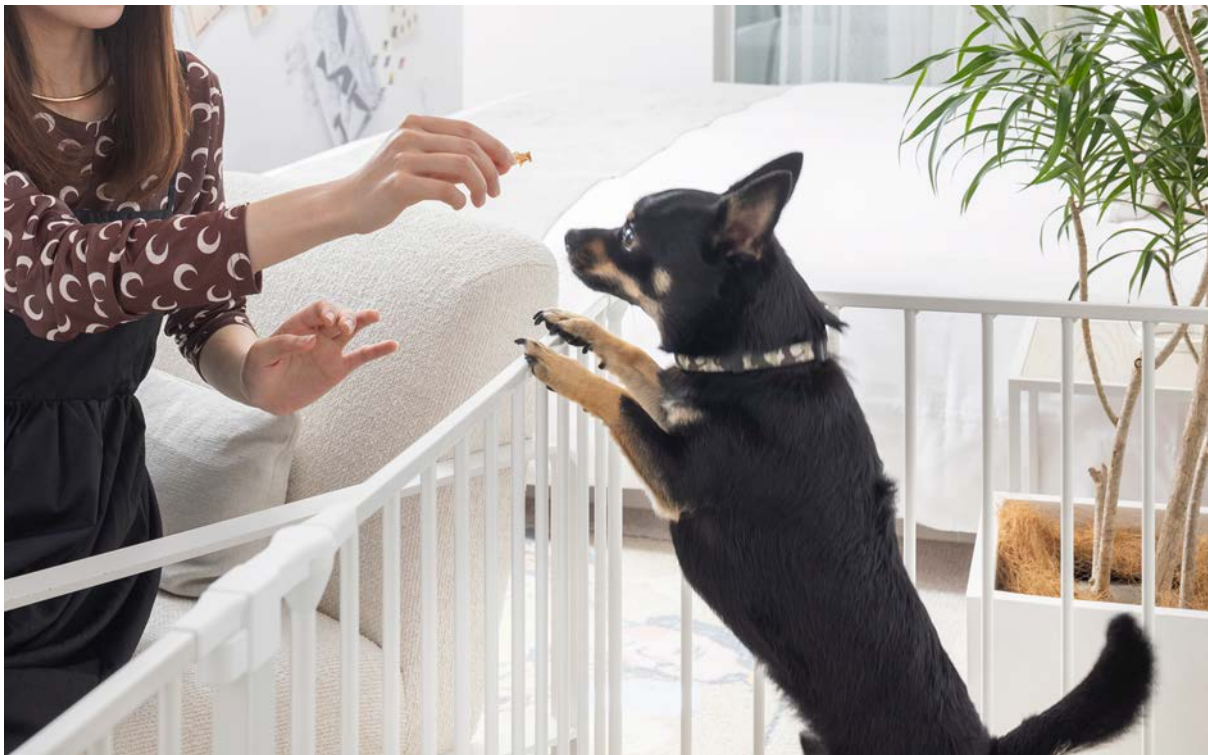


Enjoy an Art Stay with Your Dog at Shiroiya Hotel “Dog-Friendly Room” for Your Art Stay Starts on the 1st of June, 2024

Art Destination, Shiroiya Hotel (Maebashi, Gunma) welcomes guests to enjoy the art stay with their dogs. The designated room is located on the ground floor by the entrance and the walkable streets filled with lush green by the rivers are in the vicinity. Maebashi is only 100km away from Tokyo. The hotel is in the middle of downtown Maebashi where various contemporary architecture by acclaimed architects, art exhibitions, and Showa-period nostalgia are mingled.



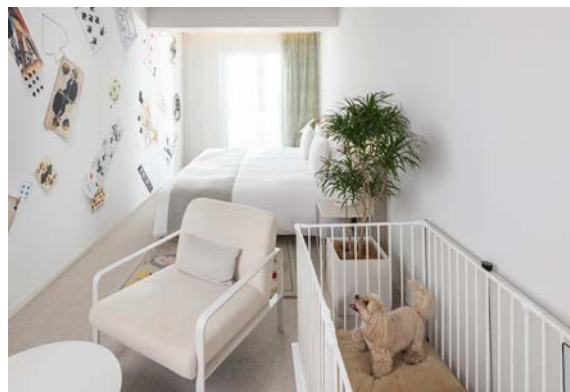
©Shinya Kigure

Dog-Friendly Room at Shiroiya Hotel

■ The following amenities and equipment are available at the Dog Friendly Room.

- Dog Playpen (W145 x D72cm)
- Dog Bed (W65 x D45cm)
- Food Bowl (W34 x D15.8cm *w/ 2 Ceramic Bowls)
- Toilet Tray
- Dog Pad
- Disposable Foot Wipe Sheet
- Trash Box for Toilet Sheet

- ※A maximum of two dogs with each dog weighing 10kg or less.
- ※Please bring food and drinks for your dog.
- ※Please keep your dog in a carrier in the hotel buildings except in your room.
- ※During your stay, your dog can stay in the dog playpen in your guest room.
- ※We can introduce you to a veterinary clinic in Maebashi City, if necessary.



©Shinya Kigure

■ Dining with Your Dog

Enjoy dining with your dog in your room, or passage (brick-paved walkway by the entrance). Please order your meal from the In-Room Dining Menu when you wish to dine with your dog in the guest room. Take-out is also available at Shiroiya Hotel's bakery and fruit tart shops.

■ Reservation

Please call the hotel or make a reservation through the following link.

●Telephone Number

027-231-4618

●Reservation Link

[Without Meals]

https://www.shiroiya.com/?tripla_booking_widget_open=search&hotel_plan_code=14872321

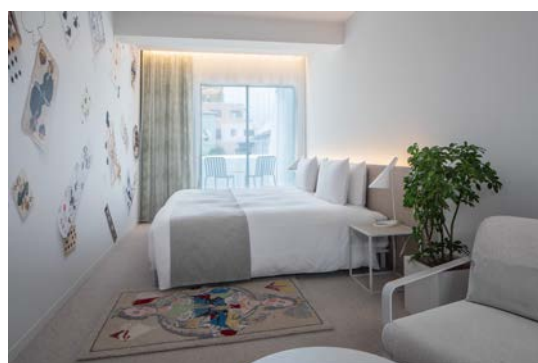
[With Breakfast]

https://www.shiroiya.com/?tripla_booking_widget_open=search&hotel_plan_code=15590039

※Please read the relevant terms and conditions when making a reservation.

■ Artwork in the Dog-Friendly Room

We have prepared a room on the first floor of Shiroiya Hotel's Green Tower, perfect for bringing your dog in and out. The room features a playing card motif from the world over by Gunma-based artist Takemura Kei, whose work combines photography, drawings, and embroidery. Her works are shown at exhibitions of famous museums and galleries in Japan and abroad, including the National Museum of Western Art and Taka Ishii Gallery. Takemura has personally painted on the playing card wallpaper covering the entire wall, and embroidered work is also installed in the bathroom. Enjoy your stay with your dog in a space filled with artwork that evokes the connection between different cultures and eras.



©Shinya Kigure

■ Recommended Areas to Spend Time with Your Dog

- An outdoor passage where you can sit in the designer chairs and enjoy meals together (a small path connecting Route 50 and Babakkawa Dori Street)
- Benches installed on Babakkawa Dori Street, which has been renovated with a brick pavement with no steps between the road and the sidewalk.
- Flat and walkable downtown filled with green and water.
- Arcades with the atmosphere of the Showa era and newly opened cafes and restaurants.
- Mount Akagi area (Roadside stations and lakes are about 30-minute ride.)



(left) Shiroiya Hotel Passage (middle) Benches in front of Shiroiya Hotel by the Babakkawa River (Right) Hirose River

■ Venue

Shiroiya Hotel

2-2-15 Honmachi, Maebashi, Gunma

※Access and Parking Information

<https://www.shiroiya.com/acc>

白井屋ホテル (群馬県前橋市本町2-2-15)

An art destination 'Shiroiya Hotel' opened in December 2020 to revitalize Maebashi City, Gunma. After the closure of the Shiroiya Ryokan (Inn), which boasted a history of over 300 years, architect Sou Fujimoto renovated and rebuilt the existing 1970s building, and the hotel has attracted attention for its collaboration with domestic and international artists and designers. The hotel has been selected as one of the National Geographic Traveler's "39 Best Hotels in the World in 2021."



©Shinya Kigure

The main dining 'SHIROIYA the RESTAURANT' has been featured in the global restaurant guidebook Gault & Millau for three consecutive years. In March 2023, the hotel published its first book, "Shiroiya Hotel *Giving Anew.*"

<https://www.shiroiya.com/>

For more information and high-resolution images, please contact the following e-mail address.
pr@shiroiya.com (Att: Minako Morita)